

PEOPLEMORE

PEOPLE

_that's IT

Who We Are?

We have been successfully creating companies for 20 years.
Such experience may not be much, but it's enough to understand that exceptional businesses are always created by exceptional people.
People. That's IT.



Piotr Kaczor
COO



Adriana Tynor
CHRO



Marcin Dąbrowski
CEO



Henryk Kazimierczak
CFO



Mateusz Cieślak
CCO

PEOPLEMORE

We have partner companies that allows us to work not only on IT-specific projects but also to offer much more.

Who We Are?



Marcin Dąbrowski
CEO

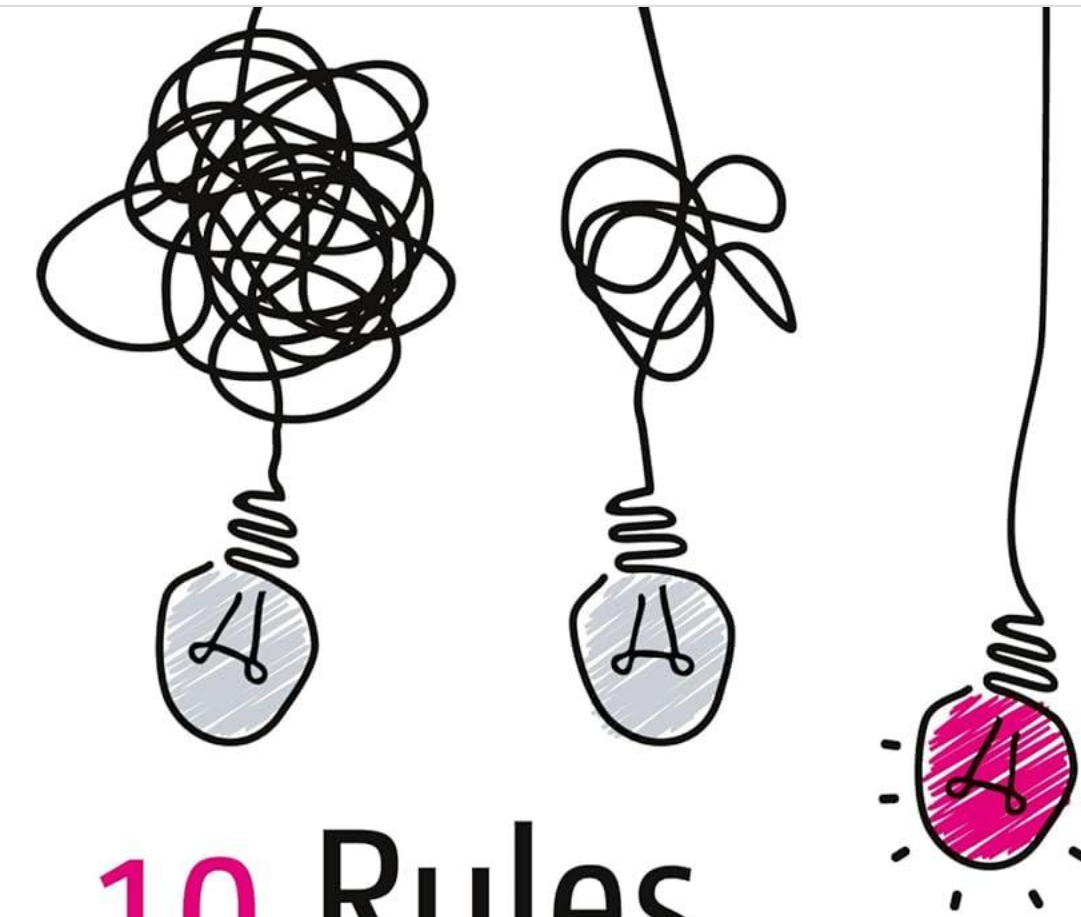


Managing IT Projects

How to Pragmatically Deliver
Projects for External Customers

—
Marcin Dąbrowski

Apress®



10 Rules for Impossible Projects

Surprising – But True – Advice
on How to Successfully Deliver
Difficult and Complex Projects

—
Marcin Dąbrowski

Apress®



**We realize clients'
business dreams
by providing the best
technology people**

Our mission

We provide the most advanced technology to customers at an affordable price.

People More delivers enterprise IT projects with the SME attitude towards responsiveness, transparency, and engagement.



Selection of clients

Finance, Banking & Insurance



Netherlands



Poland



Netherlands



Germany

CAPITAL SERVICE S.A.

Poland

Industry, manufacturing & energy



Germany



Germany



Poland



Germany

Digital Economy



Norway

Telecommunication



Great Britain



Austria



Germany



Japan

Public sector



Digital solutions for European institutions

Belgium

Digital media & broadcasters



Germany



Poland



Poland



Poland

Digital economy



Finland



Excited about technology

We're convinced that technology will always be a game-changer. Technology allows solving the most complicated problems.

People that's IT.

We know how to find the best people and right technology.

Focused on people

We believe technology is people.
Talented people make great teams.
Great teams build significant technologies.

People that's IT.

We know how to maintain high team
satisfaction and low staff turnover.



Engagement models

We deliver IT projects, where our customers choose their preferred way to cooperate with us.

Our engagement models are:

- Team Augmentation
- IT outsourcing
- Managed delivery and managed services



Our **key areas** of expertise are:



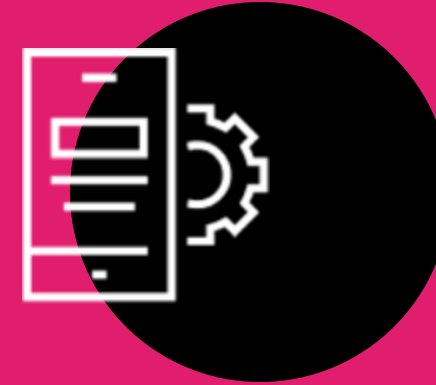
New engagement readiness in less than 2 weeks

Renting experts based on client's
bespoke requirements and competences
in less than 2 weeks



IoT / M2M

Constrained devices programming
(embedded SW development) /
Connectivity Management Platforms
maintenance / Solution Architects



Web & Mobile development

React / React Native / Angular / Vue /
iOS / tvOS / watchOS Android /
Kotlin / Flutter and many more



CX / UX / UI design

UX/UI design / UX/UI audits /
Client experience design



Software development

Java / .Net / C# / Python / Node.js / PHP /
Embedded Software and many more

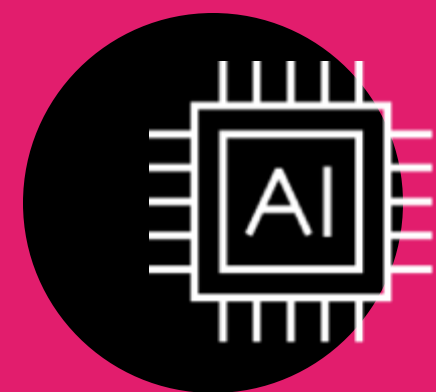
more...

Our **key areas** of expertise are:



Managed applications

Tailor-made application development /
Legacy stack maintenance /
Professional Services



Artificial Intelligence

Data mining / RPA /
AI / Machine Learning



Project management

Implementation consultants / Scrum
masters / Project Managers /
Business Analysts / Architects



Quality Assurance

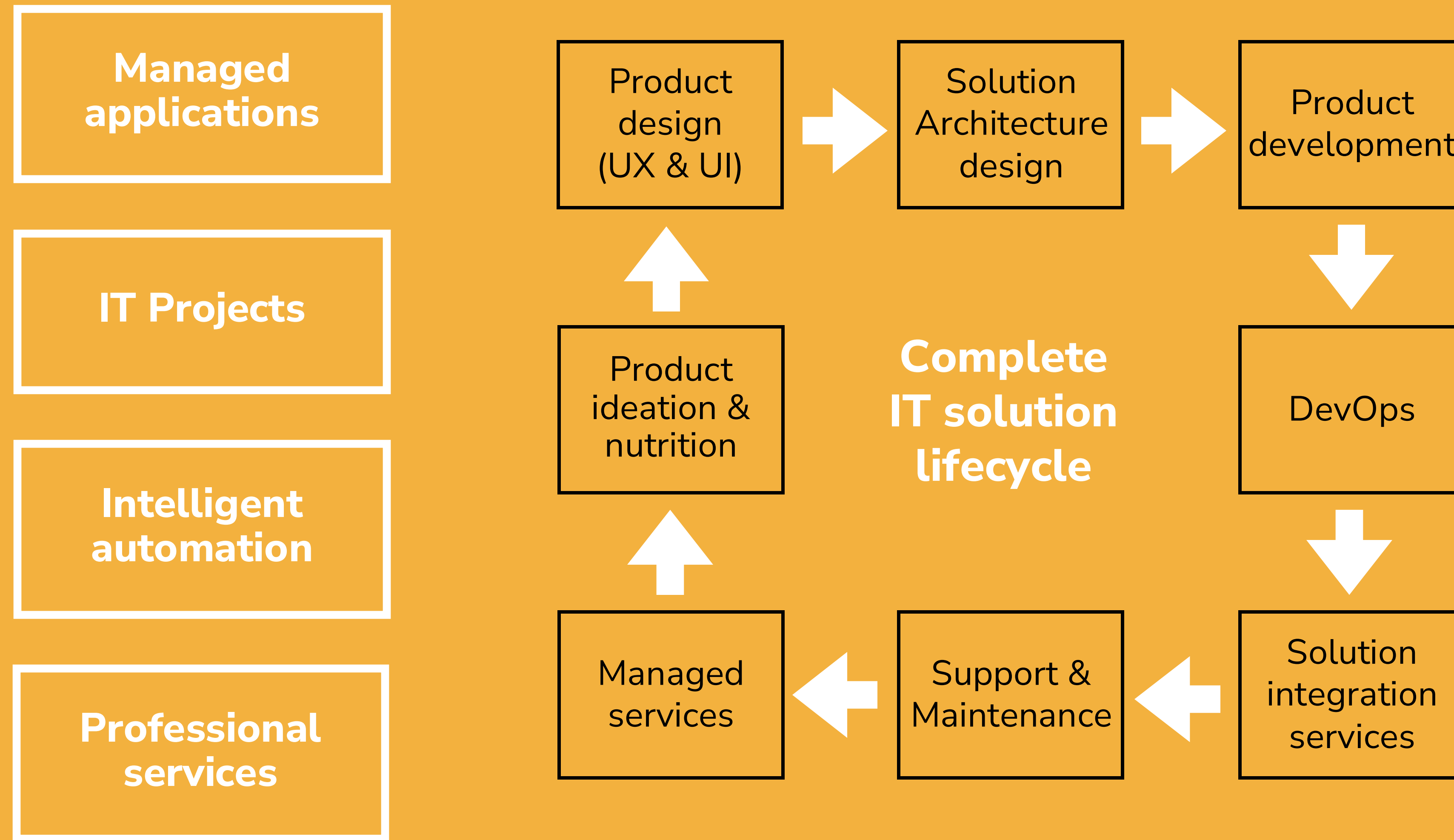
SLA Management / QA Engineering /
Quality and security audits



Digital Enterprise

Legacy stack maintenance /
AWS / Azure / GCP /
Digital Transformation Projects 2.0

How do we help **your business grow**



Why People More?

We are large enough to deliver complex IT solutions, but we are small enough to care for our customers and people we work with.

- We are able to set up teams within 10 business days
- We have access to the top 1% of experts in Europe with much lower rates than global competitors
- We have a round-the-clock mentality with discipline and hard-working in mind
- Our teams are with well below market attrition rate because we deliver attractive projects and great working conditions



I'm here to answer your questions

Mateusz Cieślak
+48 574 283 183
m.cieslak@peoplemore.eu



PEOPLEMORE

www.peoplemore.eu
ul. Orłąt Lwowskich 8, 31-518 Kraków, Poland